

2023

J8 Consulting



PORTFOLIO

www.j8consulting.com

"Is it possible?"

- Juror 8, 12 Angry Men



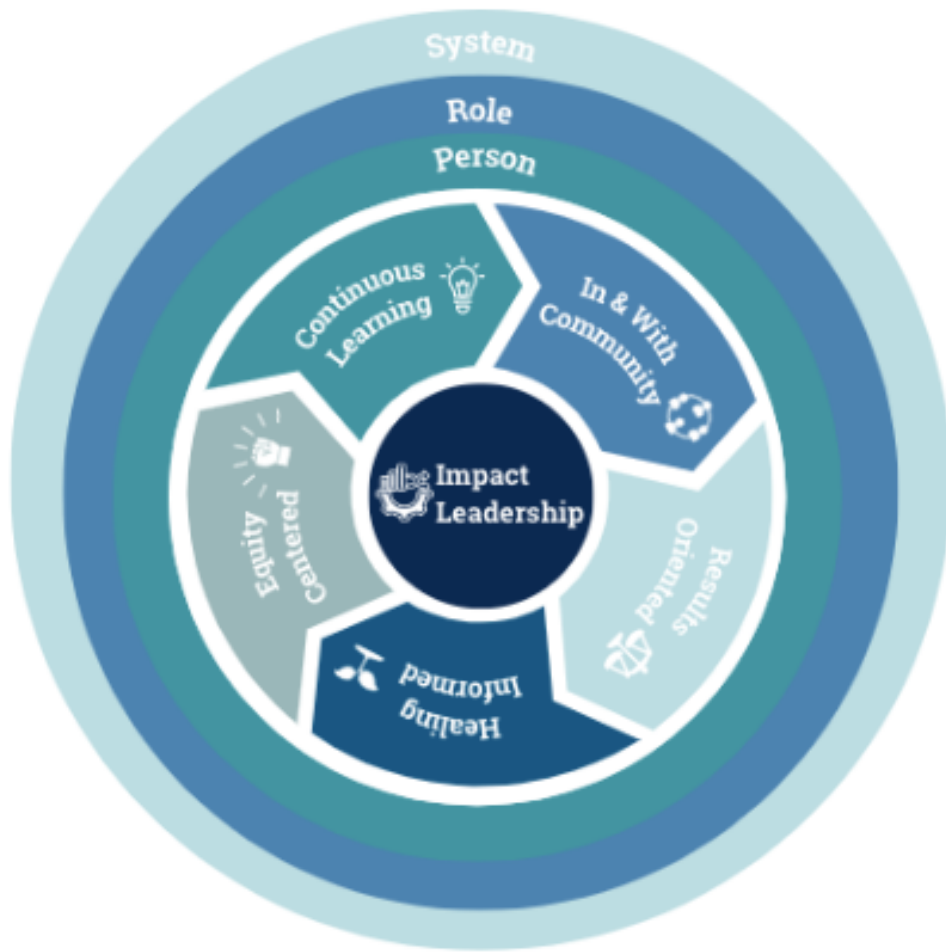
In the 1957 film 12 Angry Men, Juror 8 insists on the need to scrutinize the circumstantial evidence and establish the degree of doubt surrounding the testimonies.

He represents justice.

My purpose is to create experiences that heal and grow others.

I am a learning and leadership development expert with 15+ years of experience in state and national mission driven organizations. I have a proven ability to drive equity centered organizational and program strategy and implementation. I am excited to support you and your organization!



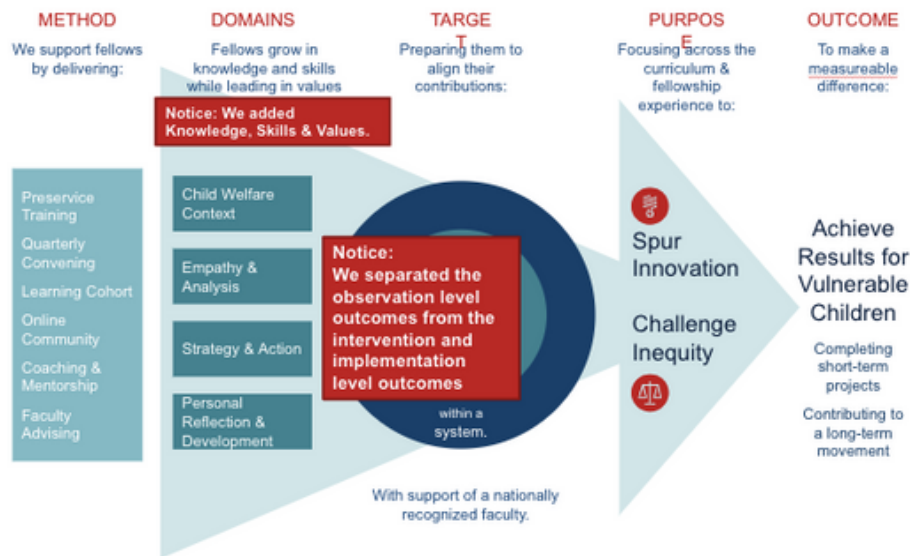


FOSTER AMERICA

In 2017, Foster America launched its first cohort and J8 Consulting partnered with Foster America to develop a foundational fellowship program model.

Develop + Accelerate Fellows as Leaders

OUR CONCEPTUAL FRAMEWORK & THEORY OF CHANGE



First prototype of Foster America's Program Theory of Change.

It begins with a fellowship **theory of change** which includes **content domains** and **methods of training** and development.



Content Domains are broken down into **Learning Outcomes** that cover the knowledge, skills and values fellows should know, do and believe **by the end of the fellowship**.



Learning Outcomes are broken down into **Session Objectives** for **convenings**, workshop, webinars, etc.

Design Process: Moving down in altitude from Theory of Change to any given webinar.

Learning & Impact Leadership Model: Learning Outcomes



Adapting in 2023: Created "mosaic tiles" that can be "mix and matched" for different programs.



VILLAGE IS POSSIBLE

In 2022 and 2023, Village is Possible partnered with J8 Consulting to design its logo, branding, grant materials, and healing centered programs.

VILLAGE IS POSSIBLE

THE CHALLENGE

Youth who have experienced the foster care system are particularly susceptible to being recruited into the sex industry due to unmet needs around love, community, belonging, stable housing and a higher disposition to trauma bonding. "Child welfare involvement, specifically out-of-home foster care placement, is one of the top contributors in increasing the chances of sex trafficking."

A report conducted in 2016 by NCMEC found that **86% of the likely sex trafficking victims were in the care of social services** when they went missing" (National Center for Missing & Exploited Children).

California is ranked as having the highest number of reported cases of human trafficking in the U.S.

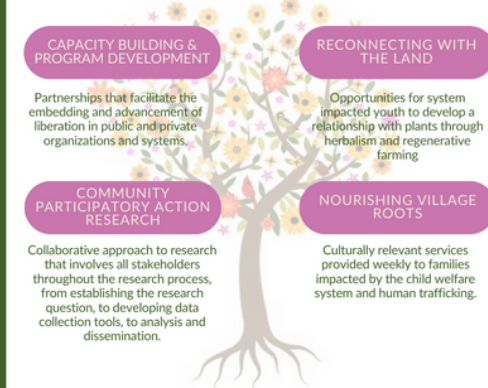
LA County, reported **92% of girls in the juvenile justice system** identified as victims of sex trafficking are Black. Of those, **62% were from the child welfare.**

THE MISSION

Village Is Possible seeks to address and heal cultural roots through the restoration of families and community (village) destroyed through colonization and genocide of Black and Brown Bodies.

THE SOLUTION

VIP is a community driven organization working alongside those who have experienced sex trafficking and/or system involvement. "Community driven" represents the shared skills in a community to design and guide their own strategic conversations.



WHAT DOES VIP NEED?

- Secure foundational funding and investment
- Increase organizational capacity
- Assemble coalition of survivor leaders and community based, healing centered providers

Our Wounds Are Our Wisdom

Design and tested Village Is Possible's first pitch materials and 3 Year Program Budget.

3 Year Growth Goals

\$5 M

Raise \$1.8 million in year 1, growing in each year

10

Grow our team to ten in order to meet our growing program needs

9

Serve all 9 counties in the Bay Area of California

Investment

CONSULTATION/DIRECT SERVICES PRICING LIST

ESTD 2023

Welcome to our Pricing collection. Based on the expressed needs of your county we have offered a three-part engagement plan.

With passion and experience, we're ready to assist you with your needs to better serve this population of youth. Feel free to reach us at any time by making a consultation appointment via phone or email



Phase One

FIRST 90 DAYS

HOLISTIC CARE ASSESSMENT

Internal needs assessment
The purpose of this needs assessment is to gain a full scope picture regarding the landscape of Solano County DCF's. Some of the primary objectives of this assessment would be to determine where the training needs are.

External Needs assessment - Identification of the needs of current CSEC identified youth across their journey through child welfare. The primary tool measurements for this process would include the CSE-IT Tool, Stages of Change, and Family Centered Treatment Planning.

\$350/HR

Phase Two

MONTHS 3-6

PROGRAM DEVELOPMENT

County Inter-Agency Protocol Development

Development of trainings specific to findings from Needs Assessment

Monthly CSEC Identification, Assessment, and Trauma-Informed/Healing Centered, Engagement, & Stages of Change Trainings

Monthly MDT Facilitation

Ongoing consultations & Needs Assessment

\$5000/MO
(20 HRS)

Phase Three

MONTHS 6-18

FAMILY CENTERED TREATMENT

For Youth & their Families:

1-2 hours weekly of Family Centered Treatment sessions

1-2 hours weekly of Healing Centered Engagement session

Monthly Rituals/Workshops

Access to Holistic Care Providers

For Child Welfare Staff:

Individual Case Consultations

Monthly MDT Facilitation

\$1000/MO PER FAMILY

We look forward to hearing from you.

| www.villageispossible.com | doctaneesh@villageispossible.org | 510-876-5087 |

Co-Designing Healing Centered, Community Based Service Menu for each level program